

PREFORMED CLAMPS, STAINLESS STEEL BANDING,  
BUCKLES, TOOLS AND SIGN SECUREMENT HARDWARE

**STRAPBINDER®**

[STRAPBINDER.COM](https://www.strapbinder.com)

# TABLE OF CONTENTS

Strapbinder®, part of the Ideal Tridon Group, is a leading global engineering solutions designer and manufacturer of stainless steel banding, preformed clamps, buckles, tools, and securement hardware used in a broad range of fastening, sealing and mounting applications.

T: 1-800-251-3220

F: 1-615-223-1550

INFO@STRAPBINDER.COM

STRAPBINDER.COM

## Index

Adaptor, J-series tool	13
Adjustable Clamping Systems	7
Snaplock	7
Banding	6
Bigbinder band	7
Economy coils	7
Mill wound coils	7
Self dispensing coil, 100 ft	7
Self dispensing coil, 200 ft	7
Steel banding	13
Steelbinder job site	13
Ribbon wound coils	13
Totes, 100 ft	6
Totes, 200 ft	7
Banding & Buckle Kits	10
Battery Powered Tensioning Tool and Attachments	12
Bigbinder banding	7
Sign hanging	9
Bolt clamp, Polebinder	9
Brackets, sign hanging	9
Buckles and seals	8
Aluminum seals	8
Crimp type seals	8
Eared seals	8
Heavy duty	8
Screwbinder buckles	8
Winged seals	8
Center punch hose clamps	3
Center punch tools	12
Clamps	3, 4, 5
Center punch, stainless steel	3
Center punch, galvanized carbon steel	3
J-Series, stainless steel	4
J-Series, galvanized steel	4
Pow'r-Tight	5
Pow'r-Wrap	5
Conduit Stand-Off Bracket	9

ID Tags	5
J-Series hose clamps	4
Job site banding, coils, strapping	13
Leg brackets, flared	9
Leg brackets, straight	9
Mounting plates	9
Polebinder bolt clamp	9
Pow'r-Tight™	5
Pow'r-Wrap™	5
Pow'r-Wrap™ Tool	12
Preformed hose clamps	3, 4, 5
Seals & buckles	8
Sign Hanging Accessories	9
Sign securement hardware	9
Conduit stand-off bracket	9
Mounting brackets	9
Polebinder bolt clamp	9
Sign brackets	9
Flared leg brackets	9
Straight leg brackets	9
Transformer Mounting Bracket	9
Self dispensing stainless coils	6
Screwbinder buckles	8
Spin tight tools	12
Stainless steel banding coils	6, 7
Steelbinder™ banding coils	13
Totes, 100 ft coils	6, 7
Tools, tensioning	11, 12, 13
Battery Powered	11
Center punch	12
J-Series	13
Pistol Grip	13
Pow'r-Wrap™ Tool	13
Spin tight tools	12
Steelbinder	13
Transformer Mounting Bracket	9
Winged seals	8

## Industries Served

Agriculture	Industrial Hoses & Tools	Public Works
Automotive	Marine	Refining, Petro-Chemical & Process
Construction & General Contracting	Military	Shipbuilding
Electrical	Mining	Solar
Energy	Municipalities	Telecommunication
Farm	Oil & Gas	Transportation
Food & Beverage	Petroleum, Chemical & Bulk Transfer	Traffic Control
Industrial & MRO	Pipelines	Utilities

## Center Punch

Strapbinder's double wrapped center punch preformed hose clamps are available in various materials and diameters to satisfy a wide variety of applications. Available in multiple diameters and 3/8" or 5/8" band widths, Strapbinder clamps can be ordered in T201 stainless steel or high strength galvanized steel with heavy duty stainless steel locks.



### Tools for Product:

- Strapbinder **HBC-300 tensioning tool (pg 9)**
- Strapbinder **F38 ratchet style application tool (pg 9)**
- Strapbinder **Battery Powered Tensioning tool #800800 (pg 8)** for maximum installation efficiency

### STAINLESS STEEL

Item No.	Clamp I.D.		Band Width		Band Thickness		Qty/Box	Carton Weight	
	inch	mm	inch	mm	inch	mm		lbs	kg
HBCP3S	13/16	20.5	3/8	9.5	.025	.64	100	3.6	1.6
HBCP311S	1-3/8	34.8	3/8	9.5	.025	.64	100	4.6	2.1
HBCP4S	1	25.4	5/8	15.9	.025	.64	100	8.3	3.8
HBCP5S	1-1/4	31.7	5/8	15.9	.025	.64	100	8.7	3.9
HBCP6S	1-1/2	38.1	5/8	15.9	.025	.64	100	9.7	4.4
HBCP7S	1-3/4	44.4	5/8	15.9	.025	.64	100	10.6	4.8
HBCP8S	2	50.8	5/8	15.9	.025	.64	100	11.5	5.2
HBCP9S	2-1/4	57.1	5/8	15.9	.025	.64	100	12.6	5.7
HBCP10S	2-1/2	63.5	5/8	15.9	.025	.64	50	6.8	3.1
HBCP11S	2-3/4	69.8	5/8	15.9	.025	.64	50	7.3	3.3
HBCP12S	3	76.2	5/8	15.9	.025	.64	50	7.7	3.5
HBCP14S	3-1/2	88.9	5/8	15.9	.025	.64	50	8.7	3.9
HBCP16S	4	101.6	5/8	15.9	.025	.64	25	4.9	2.2
HBCP18S	4-1/2	114.3	5/8	15.9	.025	.64	25	5.5	2.5
HBCP20S	5	127.0	5/8	15.9	.025	.64	25	5.9	2.7
HBCP24S	6	152.4	5/8	15.9	.025	.64	25	6.8	3.1
HBCP28S	7	177.8	5/8	15.9	.025	.64	25	7.4	3.4
HBCP32S	8	203.2	5/8	15.9	.025	.64	25	8.2	3.7

### GALVANIZED CARBON STEEL

Item No.	Clamp I.D.		Band Width		Band Thickness		Qty/Box	Carton Weight	
	inch	mm	inch	mm	inch	mm		lbs	kg
HBCP3	13/16	20.5	3/8	9.5	.027	.69	100	3.6	1.6
HBCP311	1-3/8	34.8	3/8	9.5	.027	.69	100	4.6	2.1
HBCP4	1	25.4	5/8	15.9	.027	.69	100	8.3	3.8
HBCP5	1-1/4	31.7	5/8	15.9	.027	.69	100	8.7	3.9
HBCP6	1-1/2	38.1	5/8	15.9	.027	.69	100	9.7	4.4
HBCP7	1-3/4	44.4	5/8	15.9	.027	.69	100	10.6	4.8
HBCP8	2	50.8	5/8	15.9	.027	.69	100	11.5	5.2
HBCP9	2-1/4	57.1	5/8	15.9	.027	.69	100	12.6	5.7
HBCP10	2-1/2	63.5	5/8	15.9	.027	.69	50	6.8	3.1
HBCP11	2-3/4	69.8	5/8	15.9	.027	.69	50	7.3	3.3
HBCP12	3	76.2	5/8	15.9	.027	.69	50	7.7	3.5
HBCP14	3-1/2	88.9	5/8	15.9	.027	.69	50	8.7	3.9
HBCP16	4	101.6	5/8	15.9	.027	.69	25	4.9	2.2
HBCP18	4-1/2	114.3	5/8	15.9	.027	.69	25	5.5	2.5
HBCP20	5	127.0	5/8	15.9	.027	.69	25	5.9	2.7
HBCP24	6	152.4	5/8	15.9	.027	.69	25	6.8	3.1
HBCP28	7	177.8	5/8	15.9	.027	.69	25	7.4	3.4
HBCP32	8	203.2	5/8	15.9	.027	.69	25	8.2	3.7

## Smooth-Seal™ J-Series

Strapbinder J-Series clamps are ideal for most industrial hose clamping applications. Available in multiple diameters and band widths, our J-Series clamps are offered in T201 stainless steel or high strength galvanized steel with heavy duty stainless steel buckles.



### Tools for Product:

- Any of the bench mounted, pneumatic machines in the industry.
- Strapbinder **ST001 manual spin tight tool (pg 9)** with the **HBJ-001 adapter (pg 9)**
- Strapbinder **Battery Powered Tensioning tool #800500 (pg 8)** for maximum installation efficiency

### STAINLESS STEEL

Item No.	Clamp Inside I.D.		Band Width		Band Thickness		Qty/Box	Carton Weight	
	in	mm	in	mm	in	mm		lbs	kg
HBJS201	13/16	20.5	3/8	9.4	.025	.64	100	3.6	1.6
HBJS242	1	25.4	1/4	6.3	.020	.51	100	2.1	1.0
HBJS243	1	25.4	3/8	9.4	.025	.64	100	3.4	1.5
HBJS202	1-3/8	34.8	3/8	9.4	.025	.64	100	4.7	2.1
HBJS203	1	25.4	1/2	12.7	.030	.76	100	6.5	2.9
HBJS204	1-1/4	31.7	1/2	12.7	.030	.76	100	7.2	3.3
HBJS241	1-3/8	34.8	1/4	6.3	.020	.51	100	2.5	1.1
HBJS205	1-1/2	38.1	5/8	15.7	.030	.76	100	10.4	4.7
HBJS206	1-3/4	44.4	5/8	15.7	.030	.76	100	11.3	5.1
HBJS245	2	50.8	3/8	9.4	.025	.64	100	5.5	2.5
HBJS207	2	50.8	5/8	15.7	.030	.76	100	12.2	5.5
HBJS208	2-1/4	57.1	5/8	15.7	.030	.76	100	13.3	6.0
HBJS209	2-1/2	63.5	5/8	15.7	.030	.76	100	13.9	6.3
HBJS210	2-3/4	69.8	3/4	19.0	.030	.76	50	9.2	4.2
HBJS211	3	76.2	3/4	19.0	.030	.76	50	9.7	4.4
HBJS212	3-1/2	88.9	3/4	19.0	.030	.76	50	10.8	4.9
HBJS213	4	101.6	3/4	19.0	.030	.76	25	6.1	2.8
HBJS214	4-1/2	114.3	3/4	19.0	.030	.76	25	6.7	3.0
HBJS215	5	127.0	3/4	19.0	.030	.76	25	7.2	3.3
HBJS216	6	152.4	3/4	19.0	.030	.76	25	8.2	3.7
HBJS218	7	177.8	3/4	19.0	.030	.76	25	10.2	4.6
HBJS219	8	203.2	3/4	19.0	.030	.76	25	11.0	5.0

### GALVANIZED STEEL

Item No.	Clamp Inside I.D.		Band Width		Band Thickness		Qty/Box	Carton Weight	
	in	mm	in	mm	in	mm		lbs	kg
HBJS301	13/16	20.5	3/8	9.4	.027	.69	100	3.6	1.6
HBJS343	1	25.4	3/8	9.4	.027	.69	100	3.9	1.8
HBJS302	1-3/8	34.8	3/8	9.4	.027	.69	100	4.7	2.1
HBJS304	1-1/4	31.7	1/2	12.7	.027	.69	100	7.2	3.3
HBJS305	1-1/2	38.1	5/8	15.7	.027	.69	100	10.4	4.7
HBJS306	1-3/4	44.4	5/8	15.7	.027	.69	100	11.3	5.1
HBJS307	2	50.8	5/8	15.7	.027	.69	100	12.2	5.5
HBJS309	2-1/2	63.5	5/8	15.7	.027	.69	100	13.9	6.3
HBJS310	2-3/4	69.8	3/4	19.0	.027	.69	50	9.2	4.2
HBJS311	3	76.2	3/4	19.0	.027	.69	50	9.7	4.4
HBJS312	3-1/2	88.9	3/4	19.0	.027	.69	50	10.8	4.9
HBJS313	4	101.6	3/4	19.0	.027	.69	25	6.1	2.8
HBJS314	4-1/2	114.3	3/4	19.0	.027	.69	25	6.7	3.0
HBJS315	5	127.0	3/4	19.0	.027	.69	25	8.2	3.7
HBJS318	7	177.8	3/4	19.0	.027	.69	25	10.2	4.6

## Pow'r-Tight™ Clamp

The Strapbinder Pow'r-Tight clamps deliver best-in-class performance for demanding applications ideal for thick walled and higher durometer hose. Stronger than the J-Series clamp, the Pow'r-Tight is constructed with 3/4" wide T201 1/4" hard stainless steel for exceptional band strength. The Pow'r-Tight has a smooth seal design for gap free contact, a heavy duty buckle, and is double wrapped to provide optimal holding power. Offered in diameters from 2" to 9".



### STAINLESS STEEL

Item No.	Clamp Inside I.D.		Band Width		Band Thickness		Qty/Box	Carton Weight	
	in	mm	in	mm	in	mm		lbs	kg
HDSL227	2	50.8	3/4	19.1	0.030	0.76	100	16.9	7.7
HDSL210	2.75	69.8	3/4	19.1	0.030	0.76	50	10.3	4.7
HDSL211	3	76.2	3/4	19.1	0.030	0.76	50	10.8	4.9
HDSL212	3.5	88.9	3/4	19.1	0.030	0.76	50	6.2	2.8
HDSL213	4	101.6	3/4	19.1	0.030	0.76	25	6.7	3.0
HDSL214	4.5	114.3	3/4	19.1	0.030	0.76	25	7.2	3.3
HDSL215	5	127	3/4	19.1	0.030	0.76	25	7.9	3.6
HDSL216	6	152.4	3/4	19.1	0.030	0.76	25	8.9	4.0
HDSL217	6.5	165.1	3/4	19.1	0.030	0.76	25	9.9	4.5
HDSL218	7	177.8	3/4	19.1	0.030	0.76	25	9.9	4.5
HDSL219	8	203.2	3/4	19.1	0.030	0.76	25	11.1	5.0
HDSL228	9	228.6	3/4	19.1	0.030	0.76	10	12.2	5.6

## Pow'r-Wrap™ Ties

The Strapbinder Pow'r-Wrap is a stainless steel tie that is dependable, easy to apply, and can be used in a broad range of fastening, securing, and sealing applications. The Pow'r-Wrap is constructed with 304 stainless steel for exceptional corrosion resistance in outdoor environments. The tie is a smooth seal design for gap free contact & tensions, cuts and locks for quick and easy application. It can be used for the securement of ducting, tags, hoses, cable bundles and constant velocity boots. Offered in lengths of 10" up to 35".



### Tool for Product:

- Strapbinder [Pow'r-Wrap Tool \(pg 11\)](#)

### STAINLESS STEEL

Item No.	Width		Length		Thickness		Carton Qty	Carton Weight		Hose OD*
	inch	mm	inch	mm	inch	mm		lbs	kg	inch
HBPW211	1/4	6.35	10	254.0	0.015	0.38	500	6.4	2.9	2
HBPW212	1/4	6.35	16.5	419.1	0.015	0.38	500	10.1	4.6	4
HBPW213	1/4	6.35	22.5	571.5	0.015	0.38	500	13.3	6.0	6
HBPW214	1/4	6.35	29	736.6	0.015	0.38	500	17.6	8.0	8
HBPW215	1/4	6.35	35	889.0	0.015	0.38	500	21.2	9.6	10

For a complete, reliable system, use with Pow'r-Wrap Ties with [ID Tags \(below\)](#) and the [Pow'r-Wrap Tool \(pg. 11\)](#).

## Identification Tags

The ID tags are .015" thick and can be fastened with Strapbinder Pow'r-Wrap ties.



Item No.	Description	Material	Qty/Box	Carton Weight	
				lbs	kg
ST750350	3/4" X 3-1/2"	T304	100	0.6	0.30
ST750200	3/4" X 2"	T316	100	0.5	0.20
ST150250	1-1/2" X 2-1/2"	T316	100	1.4	0.67

# STAINLESS STEEL BANDING

Strapbinder stainless steel banding is available in Type 201, 304 or 316 stainless steel. Strapbinder stainless is ideal for large diameter hose assemblies, sign securement, insulation applications and general construction use. It is made with a conditioned edge for safer handling.

## Type 201 Stainless Steel

Type 201 stainless steel has excellent mechanical properties and strength. Due to its high work hardening rate, it possesses uniform elongation for improved stretchability for severe forming applications such as strapping bands and preformed hose clamps.

## Type 304 Stainless Steel

Type 304 stainless steel is an 18% chromium and 8% nickel alloyed stainless steel. Used most often in outdoor industrial applications, it offers good corrosion resistance and is weldable.

## Type 316 Stainless Steel

Type 316 stainless steel provides superior corrosion resistance, making it ideal for use near salt water and petrochemical facilities.



## 100 ft. Self Dispensing Coils

Item No.	Width		Type	Thickness		Weight		Qty/Coil	
	inch	mm		inch	mm	lbs	kg	ft	M
ST202	1/4	6.3	201	.020	.51	1.7	0.9	100	30
ST203	3/8	9.5	201	.025	.63	3.2	1.6	100	30
ST204	1/2	12.7	201	.030	.76	5.1	2.4	100	30
ST205	5/8	15.8	201	.030	.76	6.4	3.0	100	30
ST206	3/4	19.0	201	.030	.76	7.7	3.6	100	30
ST404	1/2	12.7	316	.030	.76	5.1	2.4	100	30
ST406	3/4	19.0	316	.030	.76	7.7	3.6	100	30



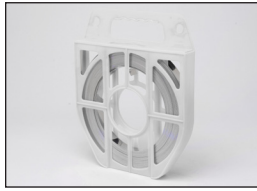
## 100 ft. Plastic Totes (Type 201 Stainless Steel)

Item No.	Width		Tote Color	Thickness		Weight		Qty/Coil	
	inch	mm		inch	mm	lbs	kg	ft	M
ST204B	1/2	12.7	Blue	.030	.76	5.1	2.4	100	30
ST205G	5/8	15.8	Green	.030	.76	6.4	3.0	100	30
ST206R	3/4	19.0	Red	.030	.76	7.7	3.6	100	30



## 200 ft. Economy Coils for Light Duty Applications

Item No.	Width		Type	Thickness		Weight		Qty/Coil	
	inch	mm		inch	mm	lbs	kg	ft	M
ST128/904	1/2	12.7	304	.015	.38	5.5	2.5	200	61
ST183/914	1/2	12.7	304	.020	.51	7.0	3.2	200	61
ST184	1/2	12.7	304	.025	.63	8.5	3.6	200	61
ST129/905	5/8	15.8	304	.015	.38	6.4	3.0	200	61
ST129.5/915	5/8	15.8	304	.020	.51	8.5	3.6	200	61
ST163/916	3/4	19.0	304	.020	.51	11.2	5.1	200	61
ST165	3/4	19.0	304	.025	.63	12.7	5.8	200	61



## 200 ft. Plastic Totes (Type 304 Stainless Steel)

Item No.	Width		Tote Color	Thickness		Weight		Qty/Coil	
	inch	mm		inch	mm	lbs	kg	ft	M
ST128/904W	1/2	12.7	White	.015	.38	5.5	2.5	100	30
ST183/914W	1/2	12.7	White	.020	.51	7.0	3.2	100	30
ST129/905W	5/8	15.8	White	.015	.38	6.4	3.0	100	30
ST129.5/915W	5/8	15.8	White	.020	.51	8.5	3.6	100	30
ST163/916W	3/4	19.0	White	.020	.51	11.2	5.1	100	30



## Bigbinder Band

Item No.	Width		Type	Thickness		Weight		Qty/Coil	
	inch	mm		inch	mm	lbs	kg	ft	M
ST430	3/4	19.0	201	.044	1.1	11.6	5.4	100	30
ST431	1	25.4	201	.044	1.1	13.7	6.4	100	30
ST432	1-1/4	31.8	201	.044	1.1	17.2	8.0	100	30



## Millwound Coils

Item No.	Width		Type	Thickness		Weight		Qty/Coil		Wound
	inch	mm		inch	mm	lbs	kg	ft	M	
BLCPX04155	1/2	12.7	304	.015	.38	100	45.4	3,920	1195	Oscillate
305SSR900	1/2	12.7	304	.020	.51	39	17.7	900	274	Ribbon
305SSV3000	1/2	12.7	304	.020	.51	100	45.4	3,000	914	Oscillate
BLCPX05202	5/8	15.8	304	.020	.51	100	45.4	2,300	701	Oscillate
311SSR900	3/4	19.0	304	.020	.51	42	19.1	900	274	Ribbon
311SSV2000	3/4	19.0	304	.020	.51	100	45.4	2,000	610	Oscillate

# ADJUSTABLE CLAMPING SYSTEM



## Ideal Tridon 58-0 Snaplock® Quick Release

Snaplock worm drive clamps are designed with a swivel-action that locks the screw to the band, making installation and removal much faster. The 58-0 clamp is constructed with 200 stainless steel 9/16" band and housing, a 410 stainless steel bridge, and a 3/8" 410 stainless steel screw. Snaplock is best suited for signs, seasonal banners, and general strapping and bundling.

Item No.	Size	Min (in)	Max (in)	Min (mm)	Max (mm)	Qty/Box
5812852	128	1-3/4	8-1/2	45	216	250
5815252	152	2	10	51	254	250
5818852	188	2	12-1/4	51	311	250

For more sizes and information, go to page 22 in the Ideal Tridon catalog.



Strapbinder seals and buckles are ideal for forming applications such as strapping bands and preformed hose clamps.



## Buckles

Available in an ear style or heavy duty, Strapbinder buckles are made with Type 201 or Type 316 stainless steel to suit a wide variety of applications.

Item No.	Buckle Style	Material	Width		Qty/Box	Weight	
			inch	mm		lbs	kg
ST252	Ear	201	1/4	6.3	100	.3	.1
ST253	Ear	201	3/8	9.5	100	.8	.4
ST254	Ear	201	1/2	12.7	100	2.1	1.0
ST255	Ear	201	5/8	15.8	100	2.4	1.1
ST256	Ear	201	3/4	19.0	100	3.7	1.7
ST454	Ear	316	1/2	12.7	100	2.1	1.0
ST456	Ear	316	3/4	19.0	100	3.7	1.7
ST440	Heavy duty	201	3/4	19.0	25	1.8	.8
ST441	Heavy duty	201	1	25.4	25	2.4	1.1
ST442	Heavy duty	201	1-1/4	31.8	25	3.2	1.4



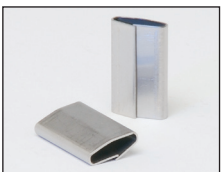
## Wing Seals

Grade 304 Stainless Steel Wing Seals can be used with Strapbinder economy stainless steel strapping (pg 6) and Steelbinder Strapping™ (pg 10).

Item No.	Material	Width		Qty/Box	Weight	
		inch	mm		lbs	kg
ST154	Stainless Steel	1/2	12.7	100	1.1	0.5
ST156	Stainless Steel	3/4	19.0	100	2.1	0.9
ST202SS	Stainless Steel	1/2	12.7	1,000	10	5.0
ST203SS	Stainless Steel	5/8	15.8	1,000	18	5.0
ST204SSHD	Stainless Steel	3/4	19.0	1,000	21	9.5
202AL	Aluminum	1/2	12.7	1,000	3.0	1.3

### Aluminum Banding (for use with Aluminum Wing Seals)

Item No.	Width		Thickness		Weight		Qty/Coil	
	inch	mm	inch	mm	lbs	kg	ft	M
SC305AL	1/2	12.7	.020	.51	2.4	1.1	200	61



## Specialty Seals

Grade 304 Crimp style stainless steel pusher seals. Use with single notch sealers. Ideal for outdoor industrial applications.

Item No.	Width		Qty/Box	Weight	
	inch	mm		lbs	kg
ST1532SS	1/2	12.7	1,000	12.0	5.5
ST1534SS	3/4	19.0	1,000	15.0	6.8

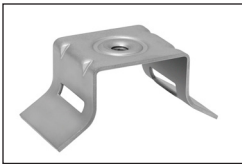


## Screwbinder™ Buckles

Screwbinder 304 stainless steel buckles are used in applications when a temporary clamp is desired or space limitations do not allow for tool roll-over. A set screw locks the band after tensioning.

Item No.	Width		Qty/Box	Weight	
	inch	mm		lbs	kg
ST724	1/2	12.7	25	.5	0.2
ST726	3/4	19.0	25	.9	0.4

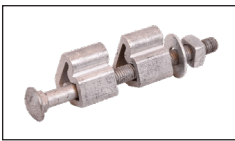
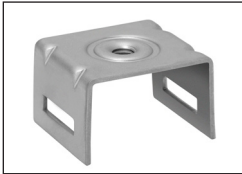




## Sign Brackets

201 stainless steel sign brackets are available for sign mounting, using Strapbinder stainless steel coils and banding up to 3/4" wide. The brackets are threaded and available with or without bolts and washers.

Item No.	Type	Description	Qty/Box	Weight	
				lbs	kg
AACS216455	Bolt	Stainless Steel 5/16" - 18 x 3/4"	50	1.5	.7
AAWL213455	Washer	Plastic 7/8" OD x 3/8" ID	50	.5	.2
ST000	Straight Leg Bracket Pack	Stainless Steel Bracket with SS Bolts and Plastic Washer	50	7.6	3.4
ST004	Straight Leg Bracket	Stainless Steel Bracket only	50	6.0	2.7
ST021	Flared Leg Bracket Pack	Stainless Steel Bracket with SS Bolt and Plastic Washer	50	7.6	3.4
ST022	Flared Leg Bracket	Stainless Steel Bracket only	50	6.0	2.7



## Polebinder Bolt Clamp

Extruded aluminum fittings with zinc plated bolt, nut and washer. To be used with Strapbinder Band for mounting pole hardware.

Item No.	Description	Qty/Box	Weight Each	
			lbs	kg
ST500	Polebinder/bolt clamp for use with 3/4" strapbinder band. Includes plated nut, bolt 3/8-16 x 6" and washer	25	.43	.19
ST504	Polebinder bolt/clamp for use with 1-1/4" (31.7 mm) Bigbinder band. Includes plated nut, bolt 5/8-11 x 8" & washer	25	1.43	.65



## Mounting Bracket

Strapping holds this extruded aluminum mounting plate to utility poles. Includes bolt & nut.

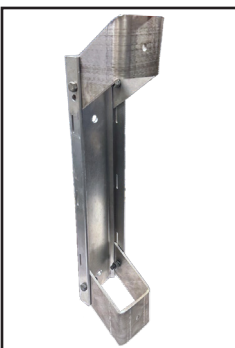
Item No.	Description	Qty/Box	Weight Each	
			lbs	kg
ST510	Mounting Bracket 1-1/2" x 4-3/4" with 5/8-11 x 2" Plated Bolt	25	.57	.26
ST512	Heavy Duty Mounting Bracket 1-1/2" x 5-1/4" with 5/8-11 x 2" Plated Bolt	25	.78	.35
ST513	Heavy Duty Mounting Bracket 1-1/2" x 5-1/4" with 5/8-11 x 3" Bolt	25	.84	.38



## Conduit Stand-Off Bracket

For mounting 1" through 6" conduit to utility poles and can adjust from 4-1/2" to 6" stand-off. Supplied with H-Bar which captures 1/2" Bolt Heads. Utilize with 1/2" Strapbinder banding.

Item No.	Description	Qty/Box	Weight Each	
			lbs	kg
ST604612	Adjustable Stand-Off, Aluminum, with 12" H-Bar Length, Use with 1/2" Banding	5	1.82	.83
ST604624	Adjustable Stand-Off, Aluminum, with 24" H-Bar Length, Use with 1/2" Banding	5	2.46	1.12
ST604636	Adjustable Stand-Off, Aluminum, with 36" H-Bar Length, Use with 1/2" Banding	5	3.08	1.4



## Transformer Mounting Bracket

Item No.	Description	Qty/Box	Weight Each	
			lbs	kg
ST6157	For use with 3/4" or 1-1/4" Banding. Transformer bracket for mounting (1) 30KVA thru 100KVA transformer, 12" or 24" EEI-NEMA type A and B lugs.	1	6.5	2.95

## Stainless Steel Banding & Wing Seal Kits

Precut band and assembled wing seal with banding smooth edges to save installation time and labor cost

### Tools for Product:

- Strapbinder **ST001 Spin Tight Tensioning Tool (pg 11)**
- Strapbinder **ST101 Ratchet Style Tensioning Tool (pg 12)**

Item No.	Width		Type	Thickness		Finished Length		Qty/ Box	Weight	
	in	mm		in	mm	in	mm		lbs	kg
ST15436	1/2	12.7	304	0.025	0.63	36	914	25	5.1	2.3
ST15460	1/2	12.7	304	0.025	0.63	60	1524	25	7.2	3.3
ST20436	3/4	19	304	0.025	0.63	36	914	25	7.0	3.2
ST20460	3/4	19.0	304	0.025	0.63	60	1524	25	10.7	4.9

## Stainless Steel Banding & Ear Buckle Kits

Precut band and assembled ear buckle with banding smooth edges to save installation time and labor cost.

### Tools for Product:

- Strapbinder **ST001 Spin Tight Tensioning Tool (pg 11)**
- Strapbinder **ST101 Ratchet Style Tensioning Tool (pg 12)**
- Strapbinder **Battery Powered Band & Buckle Tensioning Tool #800805 (pg 10)**

Item No.	Width		Type	Thickness		Finished Length		Qty/ Box	Weight	
	in	mm		in	mm	in	mm		lbs	kg
ST25436	1/2	12.7	201	0.030	0.76	36	914	25	6.0	2.7
ST25460	1/2	12.7	201	0.030	0.76	60	1524	25	8.6	3.9
ST25484	1/2	12.7	201	0.030	0.76	84	2134	15	11.2	5.1
ST25636	3/4	19.0	201	0.030	0.76	36	914	25	8.4	3.8
ST25660	3/4	19.0	201	0.030	0.76	60	1524	25	12.8	5.8
ST25684	3/4	19.0	201	0.030	0.76	84	2134	15	16.7	7.6
ST45436	1/2	12.7	316	0.030	0.76	36	914	25	6.1	2.8
ST45460	1/2	12.7	316	0.030	0.76	60	1524	25	8.7	4.0
ST45484	1/2	12.7	316	0.030	0.76	84	2134	15	11.3	5.1
ST45636	3/4	19.0	316	0.030	0.76	36	914	25	8.5	3.9
ST45660	3/4	19.0	316	0.030	0.76	60	1524	25	12.9	5.8
ST45684	3/4	19.0	316	0.030	0.76	84	2134	15	16.8	7.6

## Stainless Steel Banding & Polebinder Bolt Clamp Kits

Precut band and assembled polebinder bolt clamp with banding with smooth edges to save installation time and labor cost. The bolt clamp is extruded aluminum with zinc plated bolt, nut and washer to be used with strapbinder banding for mounting pole line hardware. Constructed in 201 stainless steel.

Item No.	Banding Width		Banding Thickness		Polebinder Bolt Clamp Aluminum Width	Finished Length		Weight	
	in	mm	in	mm		in	mm	lbs	kg
ST50036	3/4	12.7	0.030	0.76	Bolt, nut, & washer 3/8-16 x 6"	36	914	19.6	8.9
ST50060	3/4	12.7	0.030	0.76	Bolt, nut, & washer 3/8-16 x 6"	60	1524	23.5	10.7
ST50084	3/4	12.7	0.030	0.76	Bolt, nut, & washer 3/8-16 x 6"	84	2134	17.2	7.8
ST50436	1 1/4	19.0	0.044	1.1	Bolt, nut, & washer 5/8-11 x 8"	36	914	31.4	11.6
ST50460	1 1/4	19.0	0.044	1.1	Bolt, nut, & washer 5/8-11 x 8"	60	1524	25.4	9.4
ST50484	1 1/4	19.0	0.044	1.1	Bolt, nut, & washer 5/8-11 x 8"	84	2134	29.2	10.8



**Part #800500**  
**Battery Powered J-Series Clamping Tool**

Battery powered clamping tool for stainless and galvanized 5/8" and 3/4" J-Series clamps. Tensions, locks and cuts the strap. Unlimited take up, no refeeding. 125 clamps per charge. Battery & charger included.



**Part #800505**  
**Battery Powered J-Series Bench Mounted System**

Battery powered clamping tool for J-Series clamps. Dual use versatility. Portable for field repairs but also bench mountable for in-house production assemblies. Bench mount fixture, foot pedal, battery & charger included.



**Part #800800**  
**Battery Powered Center Punch Tensioning Tool**

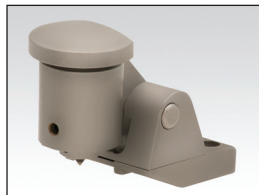
Battery powered center punch tensioning tool for 5/8 stainless steel and galvanized clamps. Single button activation. Preset tension settings yield consistent tension on each clamp applied. Battery & charger included.



**Part #800805**  
**Battery Powered Band and Buckle Tensioning Tool**

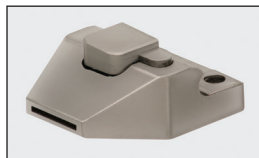
Consistent tensioning of 1/2" - 5/8" and 3/4" stainless strapping. Excellent option for large diameter hose, sign securement and bundling applications. Use with ear style buckles or wing seals. Battery and charger included.

## BATTERY POWERED TOOL ACCESSORIES



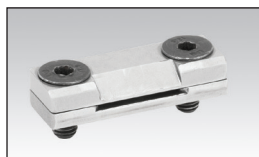
**Part #800638**  
**Center Punch Attachment**

Center Punch attachment easily attaches to the battery powered tool for the application of center punch clamps. Will accept most brands of 5/8" stainless and galvanized clamps.



**Part #800637**  
**Band and Buckle Attachment**

Band and buckle attachment easily attaches to the battery powered tool for use with band and buckle.



**Part #800802**  
**J Series Attachment**

J Series attachment easily attaches to the battery powered tool for the application of stainless and galvanized 5/8" and 3/4" J Series clamps.



SEE OUR VIDEO AT  
[STRAPBINDER.COM](http://STRAPBINDER.COM)

For hose and sign securement applications, Strapbinder offers center punch tools for use with center punch clamps and spin tight tools to tension bands and buckles. All of our tools are lightweight and easy to use.



## Center Punch Tools

### HBC-300

The HBC-300 is a rugged, ratchet action tool designed for fast, efficient application of center punch clamps.

### HBC-032

This adaptor is easily inserted into the HBC-300 center punch tool. For use with 3/8" (9.4 mm) band width clamps.



### F38

The light duty F38 is a ratchet style center punch clamp application tool. Its portable design makes it ideal for field repairs.

Item No.	Description	Weight	
		lbs	kg
HBC-300	Center punch for 5/8" (15.7 mm) clamps	3.0	1.4
HBC-032	3/8" (9.4 mm) adaptor insert for HBC-300 tool	0.5	0.2
F38*	Light duty punch for 3/8" and 5/8" (9.4—15.7 mm) clamps	1.0	0.2

\* ⚠ Warning: this product can expose you to chemicals including DINP, Di-isononyl Phthalate, which is known to the State of California to cause cancer and/or birth defects or other reproductive harm. For more information, visit [www.P65warnings.ca.gov](http://www.P65warnings.ca.gov)



## Spin Tight Tools

The spin tight tensioner features a spring-loaded gripper for more efficient band handling. A black chromium finish provides corrosion resistance. The ST001 and the ST402B are used for tensioning stainless steel bands and buckles. Affix the HBJ-001 Adapter to this tool for J-Series clamp attachment.

### ST001

The ST001 features a spring loaded gripper lever for more efficient strap handling. The cut-off handle is vinyl clad for easier operation. For use up to 3/4" x .030 band width.



### ST402B

For heavy duty applications, the ST402B Bigbinder Spin Tight Tool, can pull up to 6,000 lbs. (2668 N) of tension. The built-in cutter cuts off band prior to buckle closing.

Item No.	Description	Weight	
		lbs	kg
ST001	For stainless steel bands up to 3/4" x .030 (19 x .76 mm) Tensions up to 2400 lbs. (1068 N)	4.5	2.0
ST402B	For stainless steel bands from 3/4" .044 to 1-1/4" x .048 (19 x 1.12 mm to 31.8 x 1.22 mm) Tensions up to 6,000 lbs. (2668N)	11.0	5.0



## Pow'r-Wrap Tool

### HBPW8201

The Pow'r-Wrap tool tensions and automatically cuts Pow'r-Wrap stainless steel cable ties, leaving no burr and a clean cut-off.

Item No.	Description	Weight	
		lbs	kg
HBPW8201	For use with Pow'r-Wrap Ties & ID Tags	1.18	.54



## J-Series Adaptor

### HBJ-001

The HBJ-001 adaptor allows J-Series preformed clamps to be applied in conjunction with the ST-001 Spin Tight Tool. High tension capability with simple "lift and lock" securement. For use with 3/8", 1/2", 5/8", and 3/4" band widths.

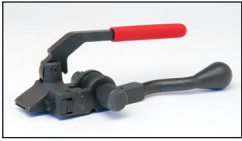
Item No.	Description	Weight	
		lbs	kg
HBJ-001	For use with J-series preformed clamps and ST-001 spin tight tool	1.5	0.7



## Steelbinder™ Tensioner

### ST101

This heavy duty windless tensioner is used with stainless steel strapping. It features a cutter and hammer knob for wing seal closing. For use with 3/8" x 3/4" x .030 (9.3-19.0 x 0.76 mm) maximum strapping. Highly portable, fast, reliable ratchet type tool. For sign hanging, insulation work and general application.



## Pistol Grip Tensioner

### ST1902D

Fast, reliable, easy to use for light duty application with 3/8" x 3/4" x .023 (9.3-19.0 x 0.58 mm) maximum strapping. Re-settable rack for additional take-up. One hand pistol grip operation is ideal for insulation and other light duty applications.



Item No.	Description	Weight	
		lbs	kg
ST101	3/8"-3/4" x .030 (9.3-19.0 x 0.76 mm)	3.0	1.4
ST1902D	3/8" x 3/4" x .023 (9.3-19.0 x 0.58 mm) pistol grip	2.5	1.1

# STEELBINDER™ "JOB SITE" STRAPPING



## Ribbon Wound Coils

For general packaging, bundling and palletizing. Painted black carbon steel Strapbinder Strapping is made from tempered, shock resistant steel for a wide range of packaging applications ranging from general palletizing to unitizing small irregular shapes.

Item No.	Width		Thickness		Break Strength	Weight		Qty/Coil	
	inch	mm	inch	mm	lbs	lbs	kg	ft	M
ST305X	1/2	12.7	.020	.51	800	29.0	13.2	865	264
ST306X	1/2	12.7	.025	.63	1,000	29.0	13.2	690	210
ST308	5/8	15.8	.020	.51	1,000	37.0	16.8	865	264
ST309	5/8	15.8	.025	.63	1,250	37.0	16.8	690	210
ST311	3/4	19.0	.020	.51	1,200	44.0	20.0	865	264
ST312	3/4	19.0	.025	.63	1,500	44.0	20.0	690	210

\* Use stainless steel wing seals with Steelbinder Strapping.



## Portable Strap Dispenser For Steelbinder™ Strapping

### ST400

Heavy duty, lightweight steel strap dispenser features brackets to hold tensioning and cutting tools along with a covered tray to carry seals. Handle is provided for maximum portability.

Item No.	Description	Coil Type	Strap size		Weight	
			inches	mm	lbs	kg
ST400	Vertical dispenser	Ribbon	3/8-3/4	9.5-19.0	15	6.8









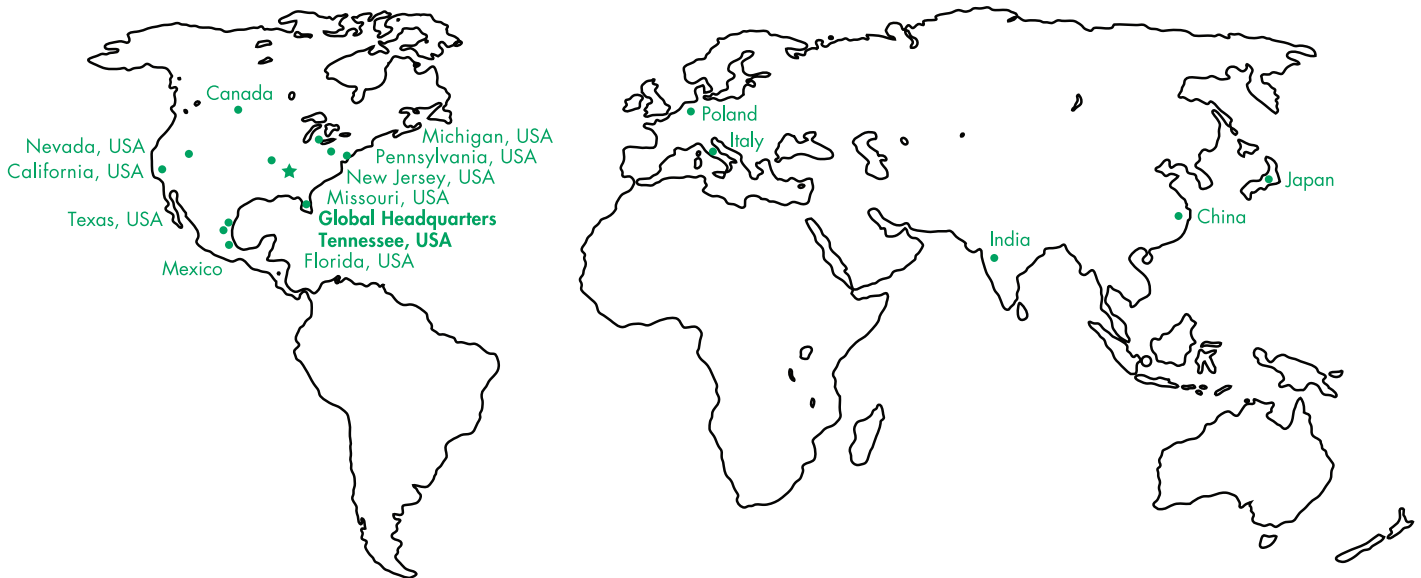




**Innovation. Quality. Service. Connections are at the center of the Ideal Tridon Group.**

We built a family of leading brands whose products connect and support pipe, tube, and hose that convey gases, liquids, and electricity. We are the global leader in worm gear, t-bolt, band, strut, specialty clamps, supports for hose, conduit, and fastening solutions, as well as fittings and couplings. Headquartered in Smyrna, Tennessee, the Ideal Tridon Group has facilities throughout North America, Europe, and Asia.

For more information about Ideal Tridon Group, visit [www.idealtridongroup.com](http://www.idealtridongroup.com).





8100 TRIDON DRIVE SMYRNA, TN 37167

**1-800-251-3220 • STRAPBINDER.COM**